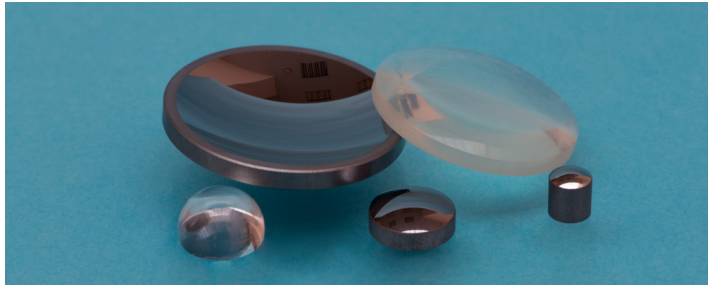


We offer THz lenses made of TPX and HRFZ-Si.



### 1. TPX Lenses

Common specification:

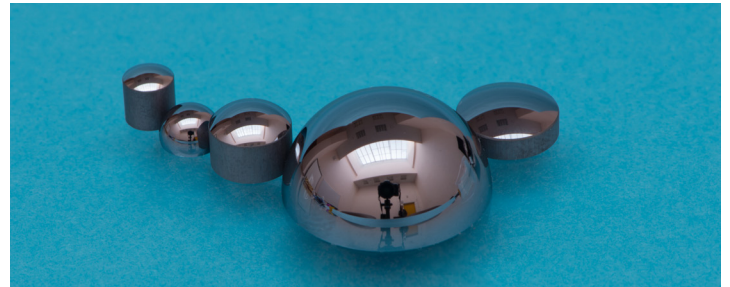
Material	TPX
Type	plano-convex, bi-convex
Available diameters, mm	to 100
Dimensions tolerance, mm	+ /-0.25
Clear aperture, %	>=90
Effective focal length (EFL) tolerance, %	+/- 1
Surface quality (two-sided polishing), scr/dig	80/50
Surface accuracy, mm	+/-0.01 deviation from ideal sphere and plane

The following TPX lenses are available from stock:

No.	Diameter		EFL*
	mm	inches	mm
1	25.4	1.0	25.0
2	25.4	1.0	50.0
3	25.4	1.0	100.0
4	25.4	1.0	200.0
5	38.1	1.5	50.0
6	38.1	1.5	75.0
7	38.1	1.5	100.0
8	38.1	1.5	150.0
9	38.1	1.5	200.0
10	50.8	2.0	50.0
11	50.8	2.0	75.0
12	50.8	2.0	100.0
13	50.8	2.0	150.0
14	50.8	2.0	200.0

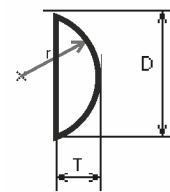
\*All EFLs are calculated for wavelength 300  $\mu\text{m}$ . EFL deviations related with refraction index dispersion at the edges of THz range (30-3000  $\mu\text{m}$ ) and within visible range are negligible in comparison with EFL tolerances manufactured. Alternate sizes (max thickness 30 mm) and custom designs are manufactured upon request. For price quotation and delivery please fill in Request Form on our web site.

### 2. HRFZ-Si Lenses

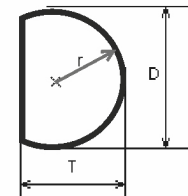


Common specification:

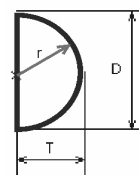
Material	HRFZ-Si
Type	spherical, hyper-hemispherical, hemispherical, hypo-hemispherical, and bullet
Available diameters, mm	2-150
Dimensions tolerance, mm	+/-0.1
Clear aperture, %	>=90
Surface quality (two-sided polishing), scr/dig	80/50
Surface accuracy, mm	+/-0.01 deviation from ideal sphere and plane
Coatings	AR coatings upon request



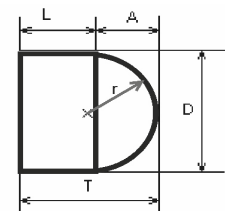
$T < D/2$   
Hypo-Hemispherical



$T > D/2$   
Hyper-Hemispherical



$T = D/2$   
Hemispherical



$T = L + A$ , where  $A \leq D/2$   
Bullet

The polished "ball-shaped" blanks of HRFZ-Si (with diameters 2.0, 4.0, 6.0, 8.0, 10.0, and 12.0 mm) are always in stock. Upon your request hyper-/hypo-/hemi-spheres will be supplied within 2 weeks as the flat surface of the lens can be polished for the required thickness. The finished parts of different dimensions are available from stock and supplied within a week. Please check the Optics stock at our website. For price quotation and delivery please fax or e-mail us.

We also offer HRZF-Si meniscus lenses .

Common specification:

Material	HRZF-Si
Type	positive meniscus
Available diameters, mm t	to 100
Diameter tolerance, mm	+0.0 / -0.1
Thickness tolerance, mm	+/-0.1
Edge thickness variation, mm	<= 0.05
Clear aperture, %	90
Effective focal length (EFL) tolerance, %	+/-1
Surface quality (two-sided polishing), scr/dig	80/50
Surface figure	varies depending on radius
Coatings	AR coatings upon request

The following HRZF-Si meniscus lenses are available from stock:

No.	Diameter		EFL*
	mm	inches	mm
1	25.4	1.0	25.0
2	25.4	1.0	50.0
3	25.4	1.0	100.0
4	25.4	1.0	200.0
5	38.1	1.5	50.0
6	38.1	1.5	75.0
7	38.1	1.5	100.0
8	38.1	1.5	150.0
9	38.1	1.5	200.0
10	50.8	2.0	25.0
11	50.8	2.0	50.0
12	50.8	2.0	75.0
13	50.8	2.0	100.0
14	50.8	2.0	150.0
15	50.8	2.0	200.0

\*All EFLs are calculated for wavelength 300  $\mu\text{m}$ . EFL deviations related with refraction index dispersion at the edges of THz range (30-3000  $\mu\text{m}$ ) and within visible range are negligible in comparison with EFL tolerances manufactured.

Alternate sizes and custom designs are manufactured upon request. Negative meniscus lenses are available. Tydex also produces aspherical silicon lenses according to customer specification. Quality of aspherical surface characterises by a roughness Ra of 15 nm. For price quotation and delivery please fill in Request Form on our website.

更多产品 请您关注 **多维光电**  
[www.dwphotonics.com](http://www.dwphotonics.com)